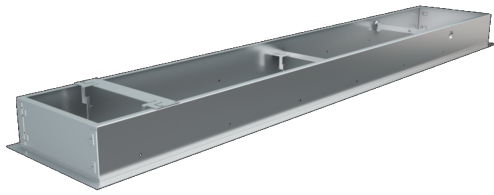




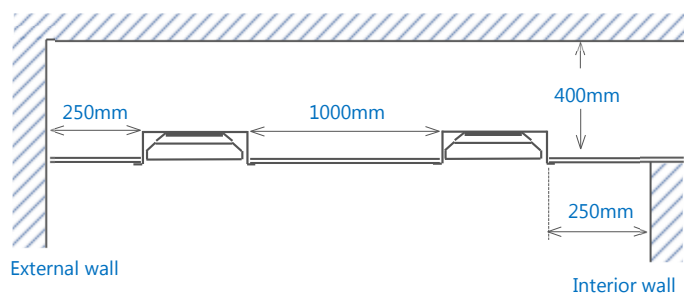
## Accessories for CL+ high temperature radiant heaters



### Recessing frame

Comfortline proprietary recess frames enabled CL+ series of heaters to be recessed into solid form ceilings (such as plaster board or ply wood) or into T-rail grid ceilings. The CL+ heaters have been tested to ensure that the radiant heaters compliances to AS/NZS60335-2-30 have not been compromised. For heaters installed into a T-rail grid ceiling, the frames and mounting devices have been independently evaluated to ensure that the mounting of the heaters is conducive to the requirements of NZ4219 (Seismic Performance Of Engineering Systems In Ceilings). Each recess frame includes over-temperature cut-out(s).

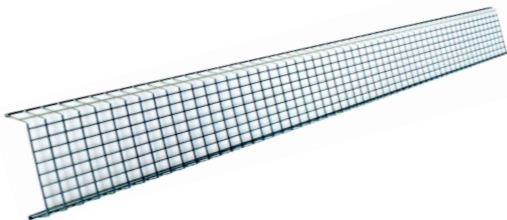
Part No	Heater models	Aperture size (mm)	Frame size (mm)	Weight (kg)
02-12V5401802	02-CL+09/12	1570 X 160	1596 X 198 X 100	4.5
02-12V5401803	02-CL+18/24	1570 X 260	1596 X 298 X 100	5.0



Note. When recessing into a T-tail grid ceiling, an proprietary accessory bridging bracket is required.

### Protective guard

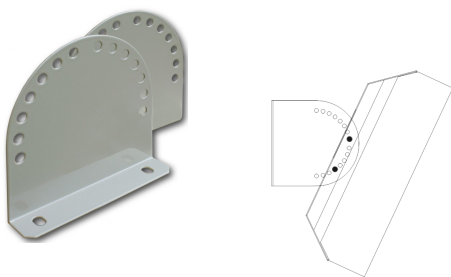
Comfortline radiant heaters are extremely robust in construction, however, for added installation security, a proprietary protective grill fabricated from punched and folded stainless steel are available as an accessory item. The material mark to space ratio has been calculated to ensure that the very small amount of reflected heat doesn't compromise the heaters AS/NZS60335-2-30 compliance. the comparatively small aperture size of the grill ensures that it is virtually impossible for sports items to be captured in close proximity to the lamella. The guard is simple to install onto the heater during installation or as a retrofit item.



Part No	Heater models	Guard size (mm)	Weight (kg)
02-CL+09-12 Grill	02-CL+09/12	1400 X 135	0.6
02-CL+18-24 Grill	02-CL+18/24	1400 X 235	0.8
02-CL+30-36 Grill	02-CL+30/36	1400 X 335	1.0

### Angle/tilt bracket

The Comfortline radiant heater angle/tilt bracket is a heavy duty low profile proprietary bracket that enables the heater to be wall or ceiling mounted and angled accordingly. The declination angle allows the heater to be angled in 7.5 degree increments. The bracket is supplied with bolts/nuts to attach to the the standard surface mount bracket which ensures that the heater is firmly supported. The bracket is finished in the same RAL9002 finish as the heater. The angle bracket set is used for all models of the Comfortline high temperature radiant heaters.



Part No	Heater models	Details
02-12V5401787	02-CL+08 to CL+36A	2 brackets per kit