

DESCRIPTION

The Schultze range of explosion proof tubular finned heaters are designed for industrial use. Their robust design and use of high quality corrosion resistant materials make them ideal for use in dirty and wet environments where back ground heat is required to prevent against frost or for minimum temperature maintenance. The explosion proof heaters are designed in accordance with the latest electrical safety standards and for use in hazardous areas. The heaters are available in a range of heat outputs and constructed of either stainless steel, painted or coated steel. All heaters are 230V 50Hz. 2 year manufacturers warranty.

APPLICATION

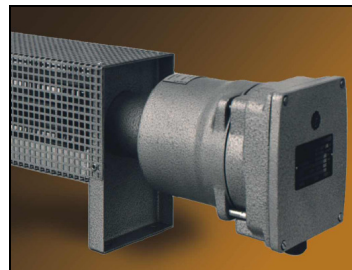
Designed for use in hazardous areas in industrial applications, and suitable for either wall or floor mounting. Especially suitable for protecting facilities against frost or dropping to undesirably low temperatures. Particularly suitable for hazardous areas that undergo regular washing/hosing down or areas that are frequently wet by spray or flooding. Applications in the industrial field for garages, workshops, pumping stations, laboratories, containers or areas requiring an explosion proof heater.

COMPLIANCES

- IEC 60335-1
- IP 56 & 66 water and dust proof



Ex1000-K1



Ex1000-L



CONSTRUCTION

- Available in either stainless steel 409, galvanised or painted options.
- Terminal box material same as the heater.

Model	Description	Power at 230V 50Hz (W)	Temperature class *	IP Rating	Length (mm)	Mass (kg)
Ex1000-K1	Galvanised/painted with protection basket	1000	T3	IP56	1450	19
Ex2000-K2	Galvanised/painted with protection basket	2000	T3	IP56	1450	21
Ex1000-E	Stainless steel, no protection basket	1000	T3	IP66	1230	18
Ex1600-E	Stainless steel, no protection basket	1600	T2	IP66	1230	18
Ex1500-E	Stainless steel, no protection basket	1500	T3	IP66	1835	25
Ex0500-L	Galvanised/painted, no protection basket	500	T3	IP56	765	12
Ex1000-L	Galvanised/painted, no protection basket	1000	T3	IP56	1260	18
Ex1500-L	Galvanised/painted, no protection basket	1500	T3	IP56	1865	25
ExRT-20-50	Explosion proof thermostat, Max 16A	Adjustable range -20°C to +50°C		IP54	-	-
* Temperature class			T4 < 135°C, T3 < 200°C, T2 < 300°C.			

INSTALLATION

- The heater is fixed to the floor or wall using the supplied mounting brackets.
- The heater should only be mounted horizontally and must not be covered.
- Ensure minimum clearances are observed as per instructions.
- Max room temperature not to exceed 40°C.

ENERSAVE Products Limited

NEW ZEALAND • PO Box 8867, CHRISTCHURCH • Free Phone/Fax : 0800 508 509 • Email : info@enersave.co.nz • www.enersave.co.nz