

### DESCRIPTION

A wall or ceiling mounted infrared heater. Stainless steel construction for long life in aggressive environments. Ideal for spot and zone heating. Complete with adjustable angle fixing brackets. Permanent connection. 2 year manufacturers warranty.

### APPLICATION

Designed for in-door or out-door wall or ceiling mounting. Can be used in commercial and industrial applications. Especially suitable for large open areas (warehouses, workshops) where only spot heating is required. An ideal solution for balconies, conservatories, indoor areas of restaurants and bars. Applications for garages and workshops, packing areas and for drying of surfaces.

### COMPLIANCES

- IEC 60335-2.30
- IP44 Splash proof design

### CONSTRUCTION

- Stainless steel casing.
- Stainless steel grille.
- Stainless steel element.
- Anodised aluminium reflector.



Type	Power (W)	Length (mm)	Breadth (mm)	Height (mm)	C/C (mm)	Minimum Distance to Heated Surface	Mass (kg)
EIR 500	500	700	75	40	500	See Fig 1	1.5
EIR1000	1000	1170	75	40	810	See Fig 1	2.0
EIR 1500	1500	1680	75	40	1220	See fig 1	3.0

Fig 1

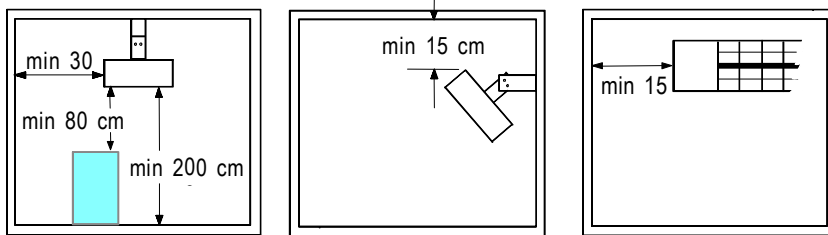
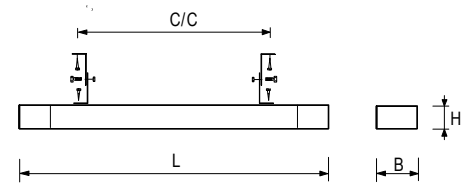


Fig 2



### INSTALLATION

- The heater is fixed to the wall or ceiling using the supplied mounting bracket and must be installed at least 2m above the ground level.
- The heater should only be mounted horizontally.
- Ensure minimum clearance as in Fig 1.
- Connect 3 core heat resistant flex.

### ENERSAVE Products Limited

NEW ZEALAND ◊ PO Box 8867, CHRISTCHURCH ◊ Free Phone/Fax : 0800 508 509 ◊ Email : info@enersave.co.nz ◊ www.enersave.co.nz