



Installation Guide

# DEVIreg™ 527

Electronic Time Regulator

[www.DEVI.com](http://www.DEVI.com)

**DEVI**® *NI*

---

**Table of Contents**

---

<b>1</b>	<b>Introduction . . . . .</b>	<b>2</b>
	1.1 Technical Specifications . . . . .	3
	1.2 Safety Instructions . . . . .	4
<b>2</b>	<b>Mounting Instructions . . . . .</b>	<b>5</b>
<b>3</b>	<b>Settings . . . . .</b>	<b>7</b>
<b>4</b>	<b>Warranty. . . . .</b>	<b>8</b>
<b>5</b>	<b>Disposal Instruction . . . . .</b>	<b>9</b>

---

**1 Introduction**


---

The DEVIreg™ 527 is an electronic time regulator with a two-pole safety switch relay.

The DEVIreg™ 527 does not require a sensor and does not regulate according to temperature - it is a timer not a thermostat.

**More information on this product can also be found at:  
[devireg.devi.com](http://devireg.devi.com)**

## 1.1 Technical Specifications

Operation voltage	220-240 V~, 50 Hz
Standby power consumption	Max. 0.25 W
Relay: Resistive load Inductive load	Max. 15 A / 3450 W @ 230 V cos φ= 0.3 Max. 1 A
Ambient temperature	-10°C to +30°C
Cable specification max.	1x4 mm <sup>2</sup> or 2x2,5 mm <sup>2</sup>
Ball pressure test temperature	75°C
Pollution degree	2 (domestic use)
Controller type	1C
IP class	31
Protection class	Class II - 
Dimensions	85 x 85 x 36 mm
Weight	90 g

The product complies with the EN/IEC Standard "Automatic electrical controls for household and similar use":

- EN/IEC 60730-1 (general)
- EN/IEC 60730-2-9 (thermostat)

## 1.2 Safety Instructions

Make sure the mains supply to the time regulator is turned off before installation.

Please also note the following:

- The installation of the time regulator must be done by an authorized and qualified installer according to local regulations.
- The time regulator must be connected to a power supply via an all-pole disconnection switch.
- Always connect the time regulator to continuous power supply.
- Do not expose the time regulator to moisture, water, dust, and excessive heat.

**IMPORTANT:** It is not recommended to use the DEVIreg™ 527 time regulator to regulate floor heating elements in connection with a wooden floor or similar materials. DEVI recommends always to use a thermostat and a floor sensor and never set the maximum floor temperature to more than 35°C.

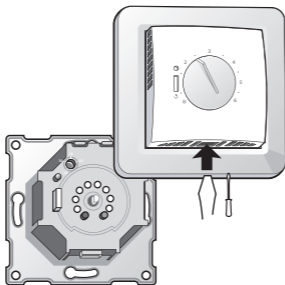
## 2 Mounting Instructions



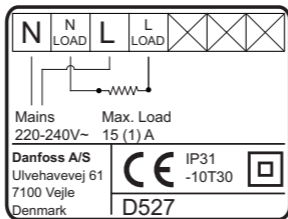
The time regulator should not be placed in wet rooms. Place it in an adjacent room. Always place the time regulator according to local regulation on IP classes.

### Follow the steps below to mount the regulator:

1. Open the time regulator.
  - Press the release tab in the bottom of the time regulator using a flat object.
  - Carefully detach the front cover.
  - Carefully detach the frame.



2. Connect the time regulator according to the connection diagram.



The screen of the heating cable must be connected to the earth conductor of the power supply cable by using a separate connector.

3. Mount and reassemble the time regulator.
  - Fasten the time regulator to a socket or an exterior wall box by driving the screws through the holes in each side of the time regulator.
  - Install the frame and front cover in the reverse order of disassembly.
4. Turn on the power supply.

### 3 Settings

---

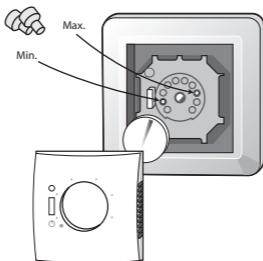
The DEVIreg™ 527 series has a LED indicator above the 2 pole safety switch (see illustration).

The LED has three indications:

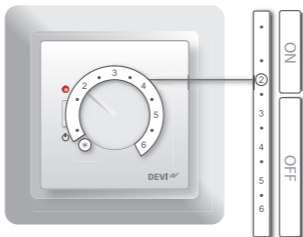
- No light means the system is off.
- Red light means system is heating.
- Green light means system is standing by.

Behind the front you can set a min. and max. setting with the blue and red pin. The pins are easily removed using a small screwdriver.

You set the heating intervals on a scale from 0 to 6 corresponding to 0-100% of the cycle (100% = 30 min). Each position (0 - 6) corresponds to 5 minutes.



Selecting position 2 means that the regulator will be on for 10 minutes and off for 20 minutes and the cycle will be repeated until you change the setting.



## 4 Warranty

---





5 Disposal Instruction

---





Danfoss A/S  
Electric Heating Systems  
Ulvehavevej 61  
7100 Vejle  
Denmark

Phone: +45 7488 8500  
Fax: +45 7488 8501  
E-mail: [info@DEVI.com](mailto:info@DEVI.com)  
Web: [www.DEVI.com](http://www.DEVI.com)

---

Danfoss can accept no responsibility for possible errors in catalogues, brochures and other printed material. Danfoss reserves the right to alter its products without notice. This also applies to products already on order provided that such alterations can be made without subsequential changes being necessary in specifications already agreed. All trademarks in this material are property of the respective companies. DEVI and the DEVI logo-type are trademarks of Danfoss A/S. All rights reserved

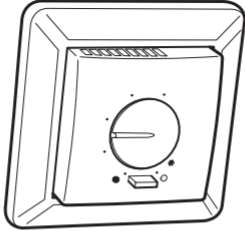
---

# **DEVIreg™ 527 ELKO**

---

**140F1041 UK**

Electronic Time Regulator  
220-240V~  
50-60Hz  
+5°C - +35°C  
15A/3450W@230V~  
IP 31



Designed



5 170